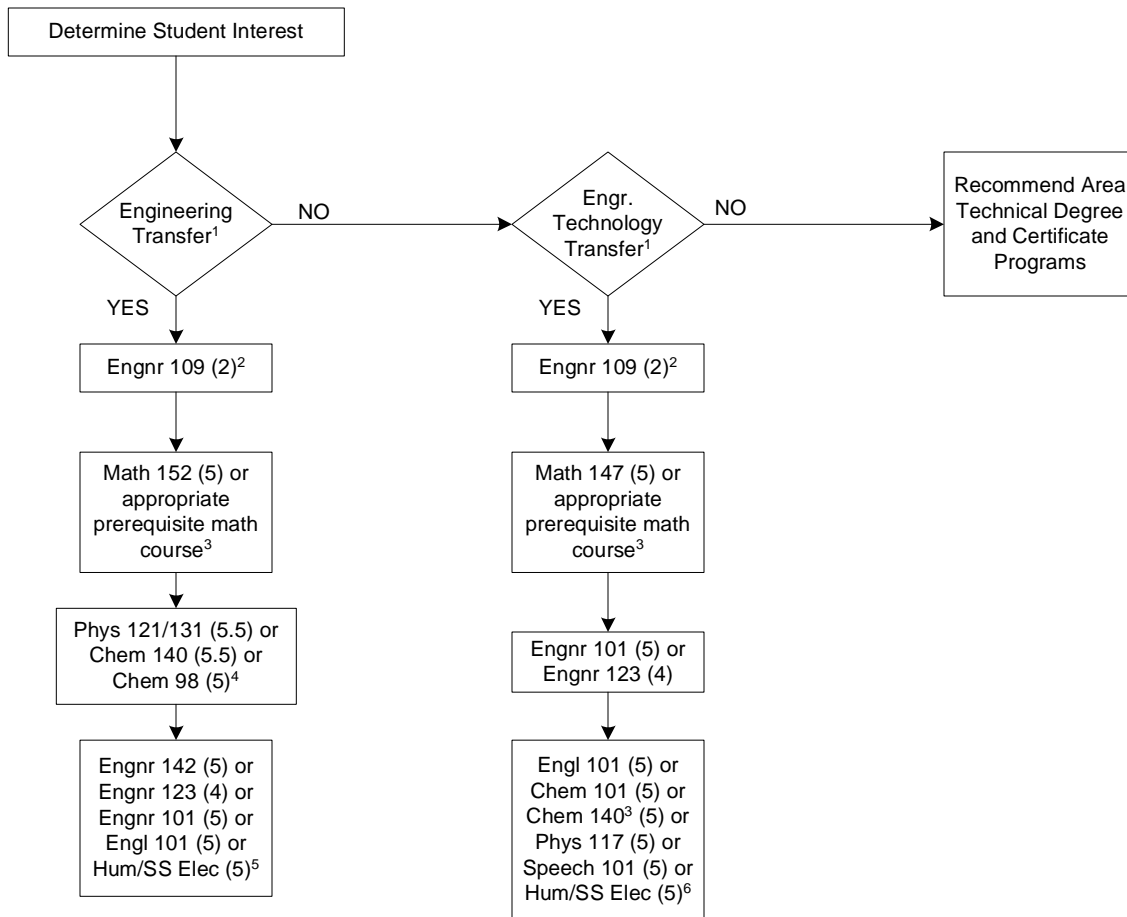


EvCC Engineering New Student Advising Guide



NOTES:

1. Most transfer students do not have to decide between engineering and engineering technology until they are registering for their third quarter. Students learn all about the difference between the two degrees in Engr 109.
2. All engineering and engineering technology transfer students should take Engr 109 at their first opportunity (offered Fall). This 2-credit orientation class is not an unreasonable burden on top of a 15 credit course load .
3. Appropriate math placement is crucial for engineering students. Many students "underplace" on our placement test. Please have them consult with a math instructor if uncertain about proper placement based on placement test scores and high school course work. **Please do not discourage students from pursuing engineering based on low math placement. Several of our best students have started in Math 65 or lower! It just takes them a little longer.**
4. Phys 121 is the best option if the student is registering for Math 153 or higher. Consult Chem 140 prerequisite for proper chemistry placement.
5. Choose based on student interest and scheduling availability/convenience. Engr 101 is required by most engineering departments at most transfer schools and is a good bet for a first-year student who knows they want to do engineering but does not know what kind. Engr 142 is required for all engineering transfer students and has a relatively low math prerequisite of Math 140. Engr 123 is required for all mechanical engineering transfers and WSU-bound civil engineering transfers. It is also a great introductory engineering elective for all students.
6. Choose based on scheduling needs and student interest. Note that all of these courses (except Chem 101 and Phys 117) also apply toward the Engineering Transfer A.S.